

PENDANT FIXTURE INSTALLATION INSTRUCTIONS

Please read carefully and save these instructions, as you may need them a later date.

CAUTION

Turn off the main power at the circuit breaker before installing the fixture, in order to prevent possible shock.

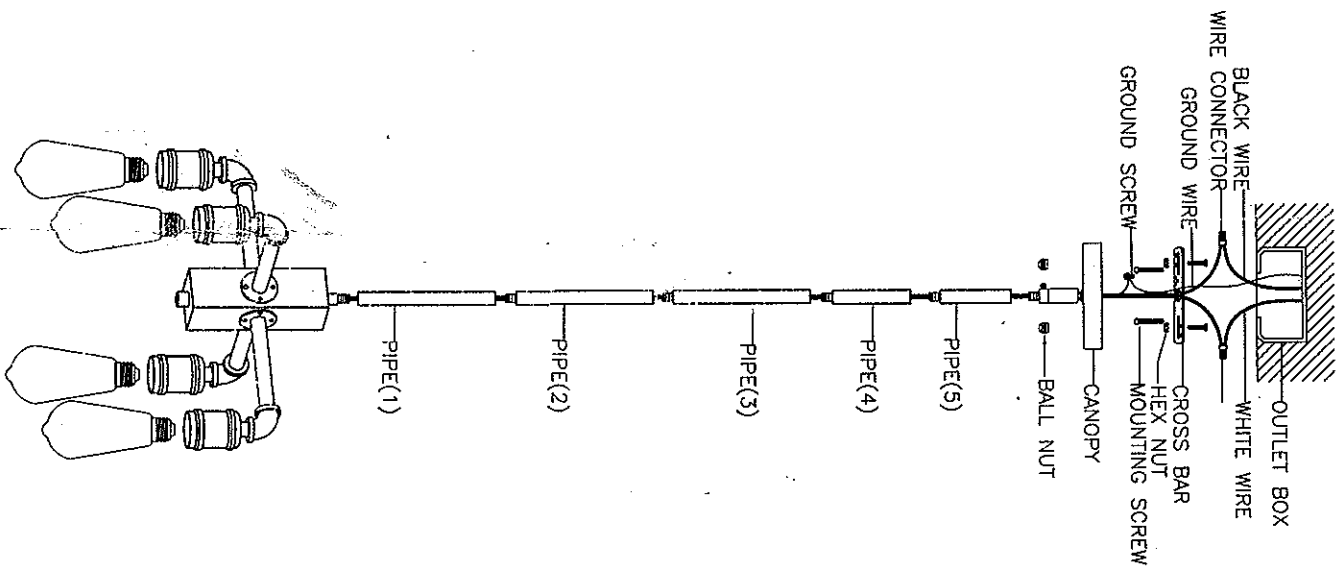
GENERAL

All electrical connections must be in accordance with local and National Electrical Code(N.E.C) standards. If you are unfamiliar with proper electrical wiring connections obtain the services of a qualified electrician. Remove the fixture and the mounting package from the box and make sure that no parts are missing by referencing the illustrations on the installation instructions.

ASSEMBLY AND INSTALLATION

- Connect the Pipe (1),(2),(3),(4), (5) together with the fixture. Then screw with the Swivel.
- Attach two Screws-1 outward through the CROSS BAR, spin the Hex nut to the Screw-1, then attach the CROSS BAR(6) to the OUTLET BOX by the two MOUNTING SCREWS.
- Make wire connections:
 - Ribbed wire(w/o marking) from light to WHITE WIRE from power source.
 - Smooth wire(w/ marking) from light to BLACK WIRE from power source.
 - Loop the GROUND WIRE to CROSS BAR with a GREEN SCREW.
- Place the CANOPY against the OUTLET BOX by screwing the Hex nut and Ball Nut
- Install bulbs: (Bulbs not including in the package)
(Please don't exceed the maximum capacity that recommended on the Sockets)

INSTALLATION IS NOW COMPLETED.



ITEM NO. 1138