



## INSTALLATION

Disconnect power at main fuse box before installing fixture to prevent possible injury from electrical shock.

Remove all parts and parts packages from carton.

In some cases it may be necessary to attach loop(11) top of fixture assembly(12). Guide fixture wire(10) through hole in loop, then screw loop onto threaded pipe protruding from top of frame.

Attach crossbar(4) to outlet box(16) with outlet box screws(3). Screw threaded nipple(6) into crossbar(4) approximately 1/2".

Connect screw collar loop(8) onto threaded nipple(6). Pass canopy(5) over screw collar loop(8). Approximately one-half of the screw collar loop exterior thread should be exposed. Adjust as required. Remove canopy. Slip threaded ring(7) onto chain, the canopy(5) onto chain. Attach other end link of chain to screw collar loop(8).

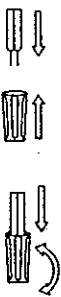
Weave electrical wires and ground wire up chain, through screw collar loop(8) through threaded nipple(6) and into outlet box(16).

Attach bare copper ground wire from outlet box and copper ground wire from fixture under cupped washer(13) and secure with green ground screw(14) onto crossbar(4).

Splice smooth round fixture wire(10) to black supply wire(15) and ribbed or flat sided fixture wire(10) to white supply wire(1) using wire connectors(2).

**CAUTION:** Be certain no bare wire strands are exposed outside of wire connectors.

Raise canopy(5) to ceiling, hold in place and secure with threaded ring(7) onto screw collar loop(11).



## PARTS LIST:

- 1 white supply wire
- 2 wire connectors
- 3 outlet box screws
- 4 crossbar
- 5 canopy
- 6 threaded nipple
- 7 threaded ring
- 8 collar loop
- 9 chain
- 10 fixture wire
- 11 loop
- 12 fixture assembly
- 13 cupped washer
- 14 green ground screw
- 15 black supply wire
- 16 outlet box

